

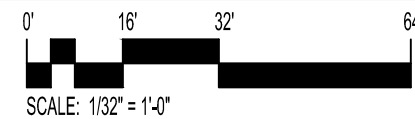


Notes:  
 Trees are depicted at sizes for installation dates  
 Site elements subject to change

**WESLEY HOUSING DEVELOPMENT CORPORATION**

**LANDSCAPE SITE PLAN**

© 2018 • Bonstra | Haresign ARCHITECTS



**Bonstra Haresign**  
**ARCHITECTS**

1728 Fourteenth Street, NW, Suite 300  
 Washington, DC 20009-4309

www.bonstra.com 202.588.9373

PLANNING COMMISSION  
 District of Columbia  
 CASE NO. 19-01  
 EXHIBIT NO. 2D5

**L-1.01**

LANDSCAPE SITE PLAN

REVISIONS

NO.	DATE	DESCRIPTION

DATE: 01/04/2019  
 PROJECT NO: 2018-014  
 DRAWN BY: RM/AM/RK  
 CHECKED BY: DHRM

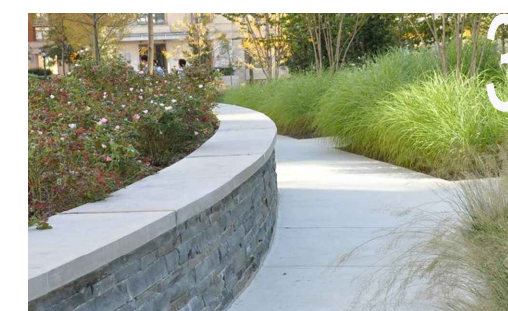
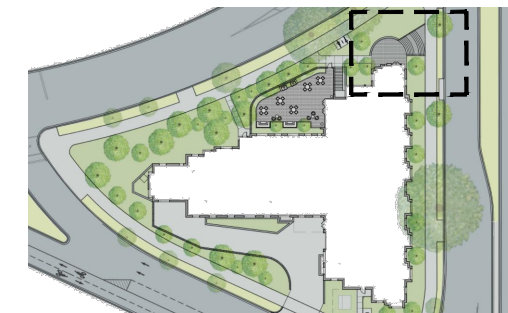
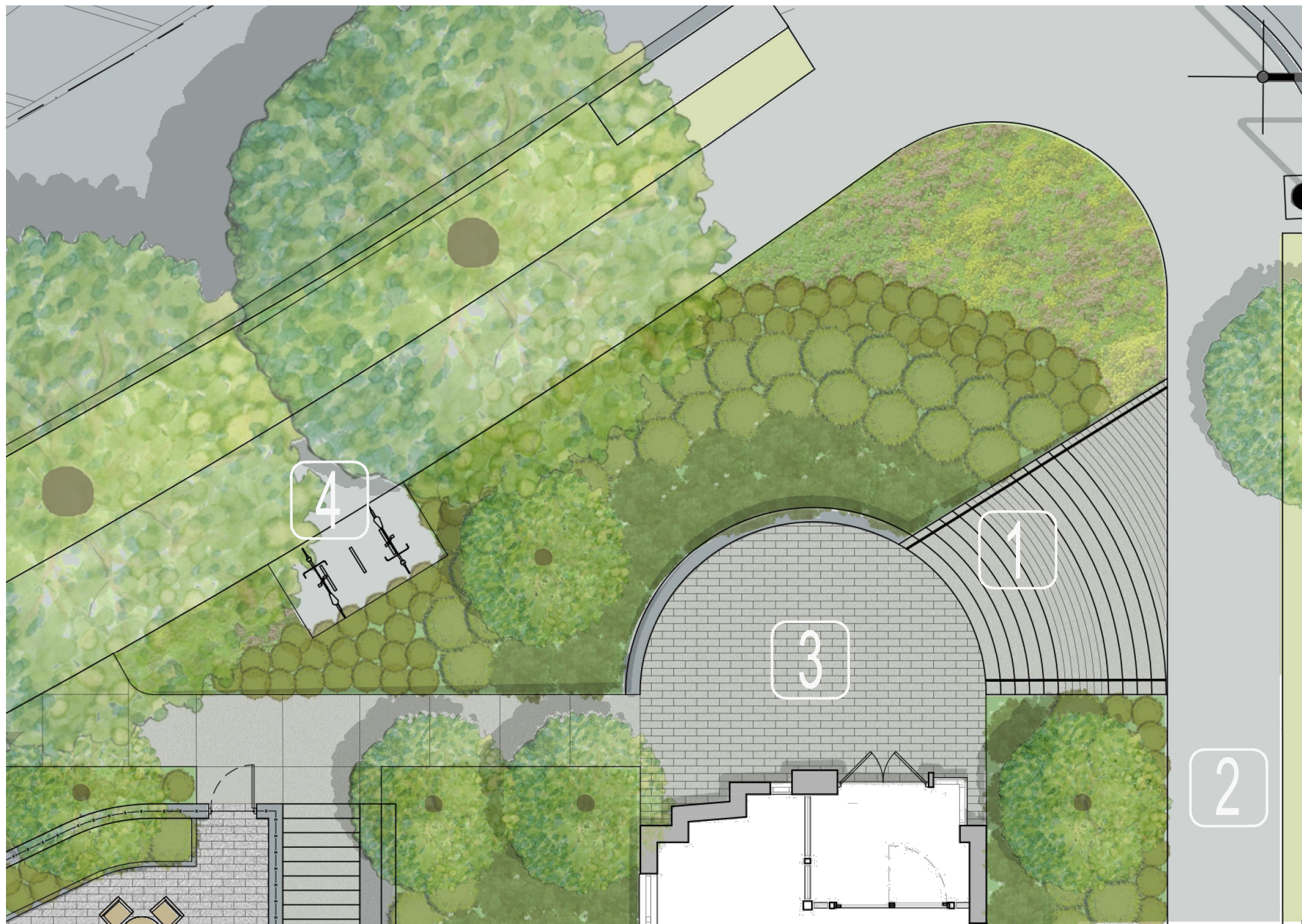
STRUCTURAL ENG CLIENT  
**RATHERBERG/GOSS ASSOCIATES, P.C.**  
 15871 CRABBS BRANCH WAY  
 ROCKVILLE, MD 20855  
 301-590-0073

MEP ENGINEER  
**CAPITOL ENGINEERING GROUP**  
 1825 K STREET NW  
 SUITE 375  
 WASHINGTON, DC 20006  
 202-216-0039

**1 HAWAII AVENUE, NE**  
 1 HAWAII AVENUE, NE  
 WASHINGTON, DC 20011

**WESLEY HOUSING DEVELOPMENT CORPORATION**  
 5515 CHEROKEE AVE #240  
 ALEXANDRIA, VA 22312





WESLEY HOUSING DEVELOPMENT CORPORATION  
5515 CHEROKEE AVE #240  
ALEXANDRIA, VA 22312

RATHGERBER/GOSS ASSOCIATES, P.C.  
15871 CRABBS BRANCH WAY  
ROCKVILLE, MD 20855  
301-590-0073

CAPITOL ENGINEERING GROUP  
1825 K STREET NW  
SUITE 375  
WASHINGTON, DC 20006  
202-216-0039

STRUCTURAL ENGINEER  
CLIENT

MEP ENGINEER

**1 HAWAII AVENUE, NE**  
1 HAWAII AVENUE, NE  
WASHINGTON, DC 20011

REVISIONS


DATE: 01/04/2019  
PROJECT NO.: 2018-014  
DRAWN BY: RML/JMR/K  
CHECKED BY: DMR

Bonstra Haresign ARCHITECTS

1728 Fourteenth Street, NW, Suite 300  
Washington, DC 20009-4309  
www.bonstra.com 202.588.9373 T

MAIN ENTRANCE PLAN

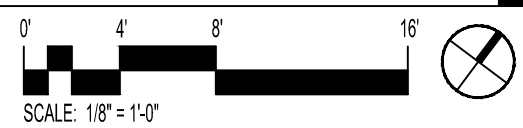
L1.02

Notes:  
Trees are depicted at sizes for installation dates.  
Site elements subject to change.

# WESLEY HOUSING DEVELOPMENT CORPORATION

## MAIN ENTRANCE PLAN

© 2018 - Bonstra | Haresign ARCHITECTS



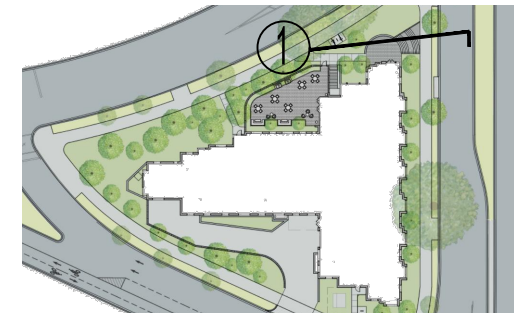
Bonstra Haresign ARCHITECTS

1728 Fourteenth Street, NW, Suite 300  
Washington, DC 20009-4309  
www.bonstra.com 202.588.9373 T

MAIN ENTRANCE PLAN

L1.02





Notes:  
 Trees are depicted at sizes for installation dates.  
 Site elements subject to change.

WESLEY HOUSING DEVELOPMENT CORPORATION  
 5515 CHEROKEE AVE #240  
 ALEXANDRIA, VA 22312

RATHGERBER/GOSS ASSOCIATES, P.C.  
 15871 CRABBS BRANCH WAY  
 ROCKVILLE, MD 20855  
 301-590-0073

CAPITOL ENGINEERING GROUP  
 1825 K STREET NW  
 SUITE 375  
 WASHINGTON, DC 20006  
 202-216-0039

1 HAWAII AVENUE, NE  
 1 HAWAII AVENUE, NE  
 WASHINGTON, DC 20011

REVISIONS

DATE: 01/04/2019  
 PROJECT NO: 2018-014  
 DRAWN BY: RM/JMK  
 CHECKED BY: DHRM

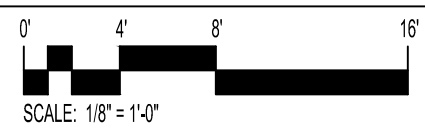
WESLEY HOUSING DEVELOPMENT CORPORATION

SECTION 1: MAIN ENTRANCE

Bonstra Haresign ARCHITECTS

SECTION 1: MAIN ENTRANCE

© 2018 - Bonstra | Haresign ARCHITECTS

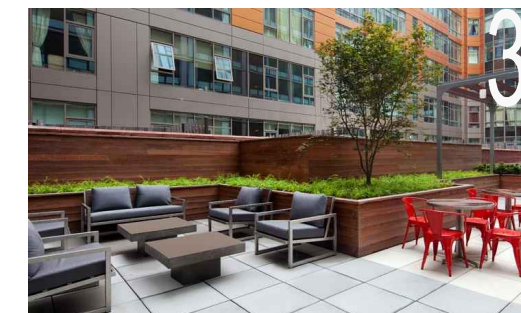
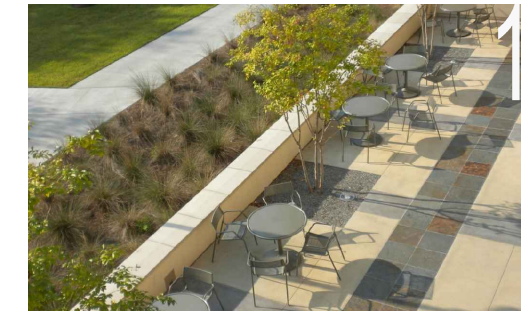
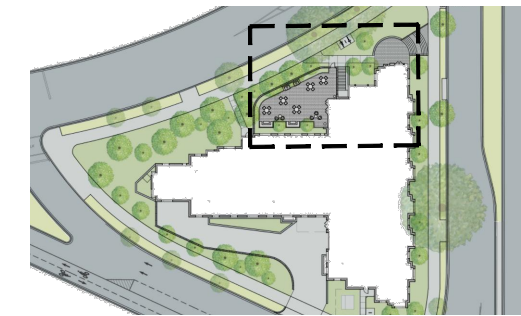
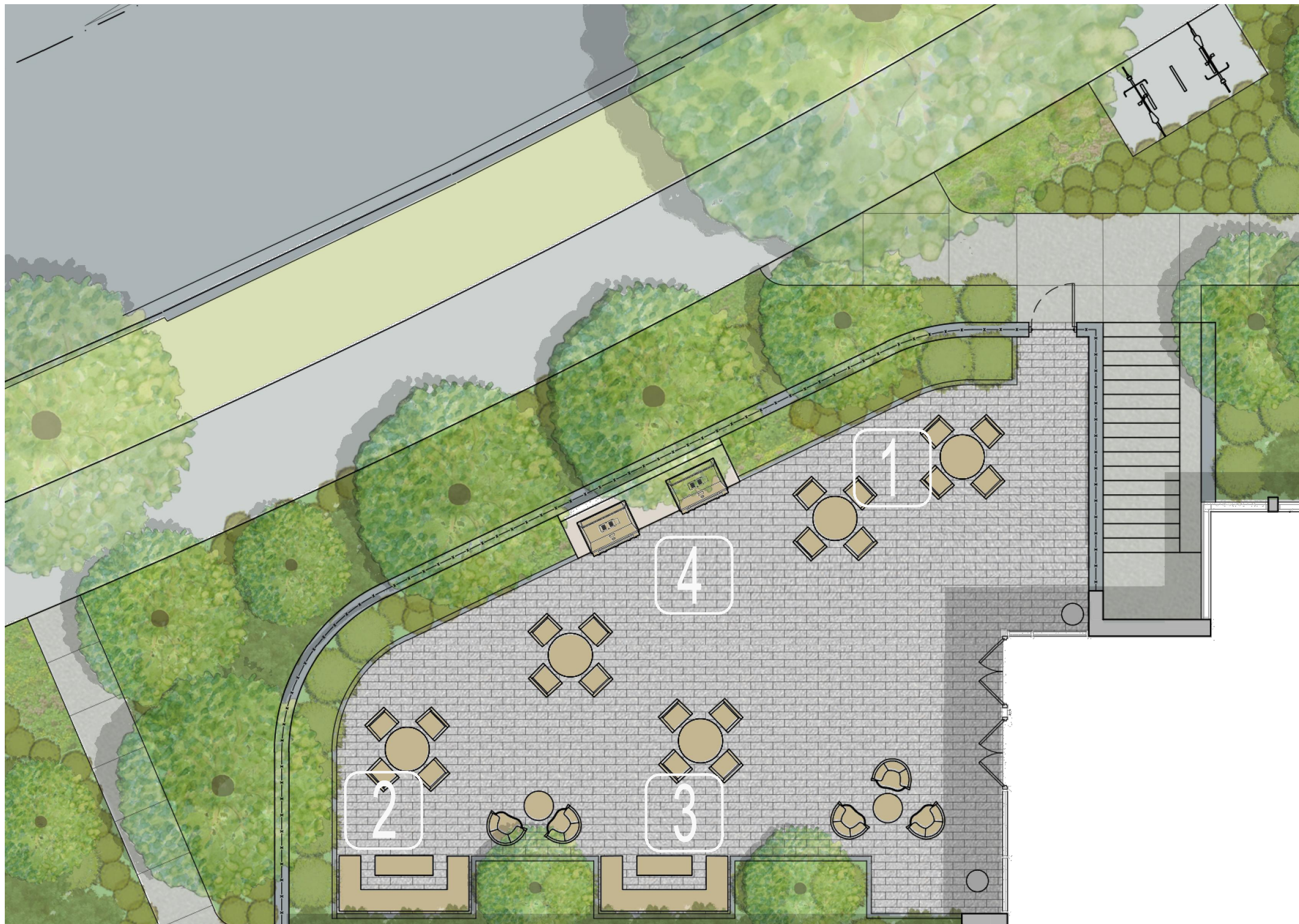


1728 Fourteenth Street, NW, Suite 300  
 Washington, DC 20009-4309

www.bonstra.com 202 588 9373 T

L1.03





WESLEY HOUSING DEVELOPMENT CORPORATION  
5515 CHEROKEE AVE #240  
ALEXANDRIA, VA 22312

RATHERBERG/GOSS ASSOCIATES, P.C.  
15871 CRABBS BRANCH WAY  
ROCKVILLE, MD 20855  
301-590-0073

CAPITOL ENGINEERING GROUP  
1825 K STREET NW  
SUITE 375  
WASHINGTON, DC 20006  
202-216-0039

1 HAWAII AVENUE, NE  
1 HAWAII AVENUE, NE  
WASHINGTON, DC 20011

REVISIONS

NO.	DATE	DESCRIPTION

DATE: 01/04/2019  
PROJECT NO: 2018-014  
DRAWN BY: RM/AM/CK  
CHECKED BY: DHRM

Notes:  
Trees are depicted at sizes for installation dates.  
Site elements subject to change.

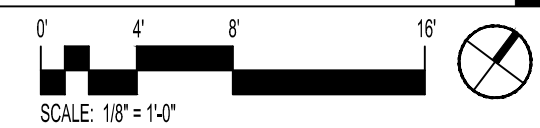
WESLEY HOUSING DEVELOPMENT CORPORATION

AMENITY TERRACE PLAN

Bonstra Haresign ARCHITECTS

AMENITY TERRACE PLAN

© 2018 - Bonstra | Haresign ARCHITECTS



1728 Fourteenth Street, NW, Suite 300  
Washington, DC 20009-4309

www.bonstra.com 202.588.9373 T

L1.04